



Water Use in the Santa Fe Basin

Stacie Greco, Water Resources Manager
Environmental Protection Department

February 2021



The Big Picture

Less than 1% of the water on the planet is readily available for human use.

Water is being polluted by too many nutrients (nitrogen and phosphorus)

Where Do We Get Our Water?



Our aquifer

**Our
water**

It's all connected.

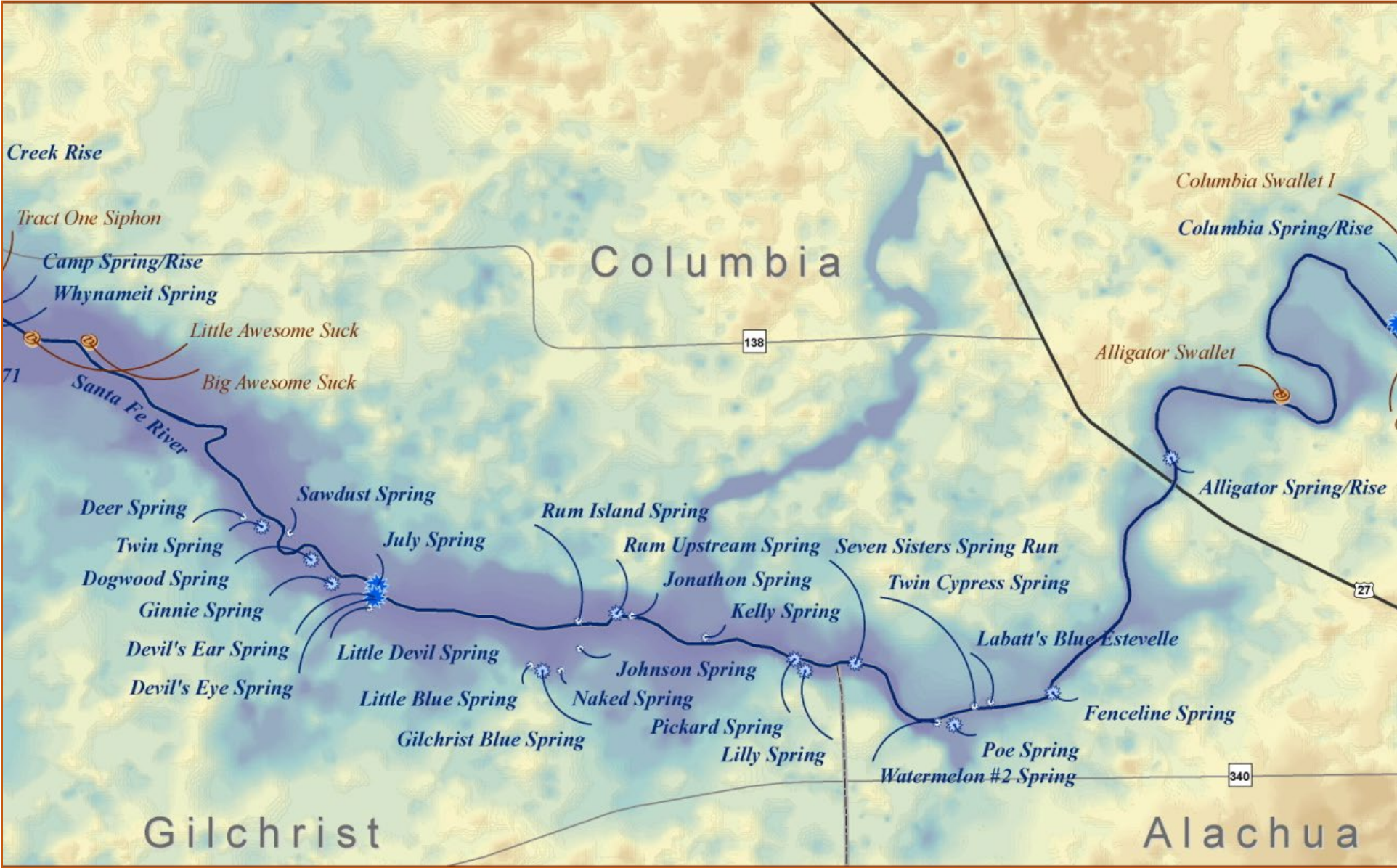


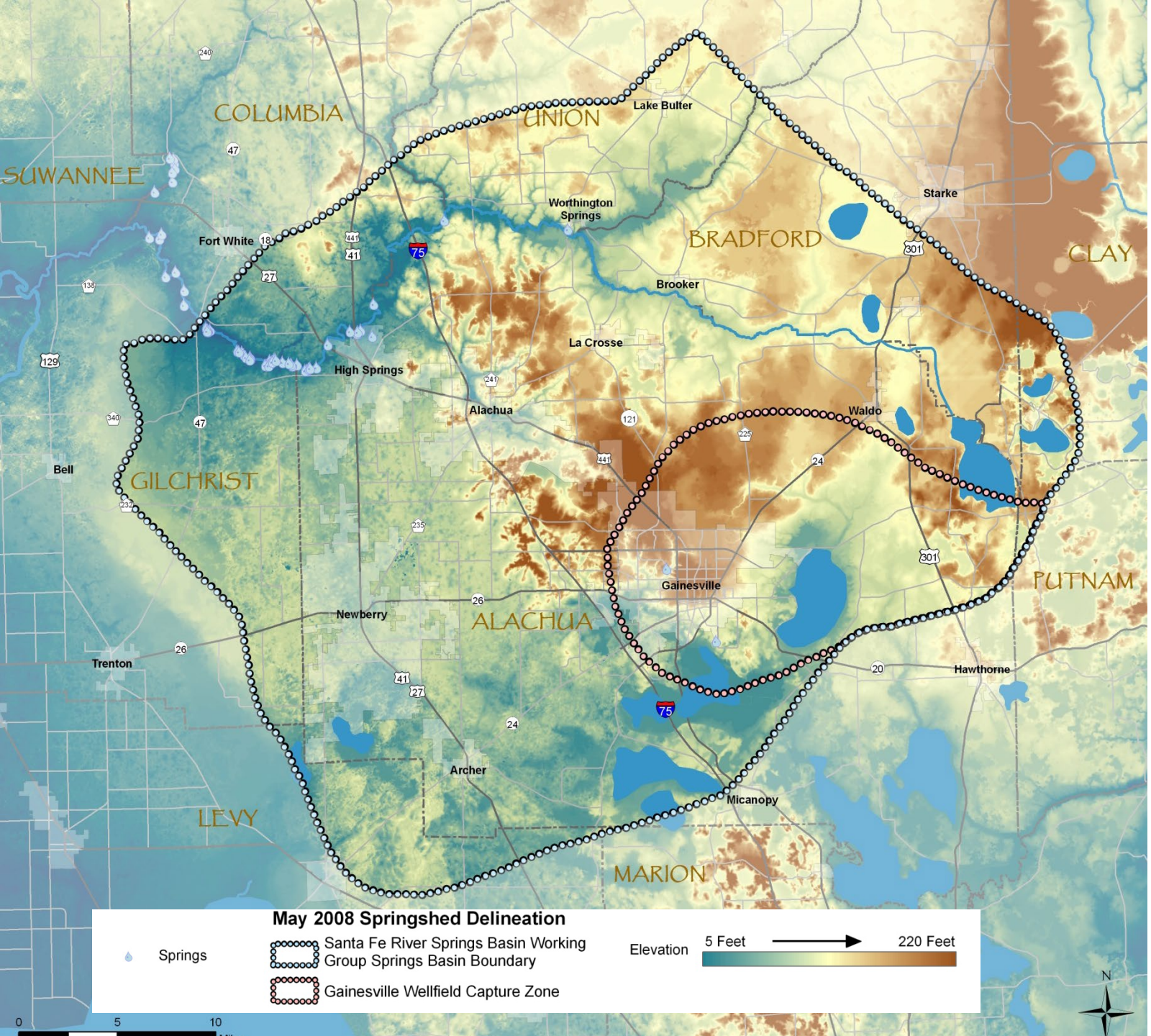


Our springs

**Our
water**
It's all connected.

Springs of the Santa Fe River Depend on the Aquifer





A **springshed** is the area of land where when rainwater soaks into the ground, it contributes to the flow of the springs.



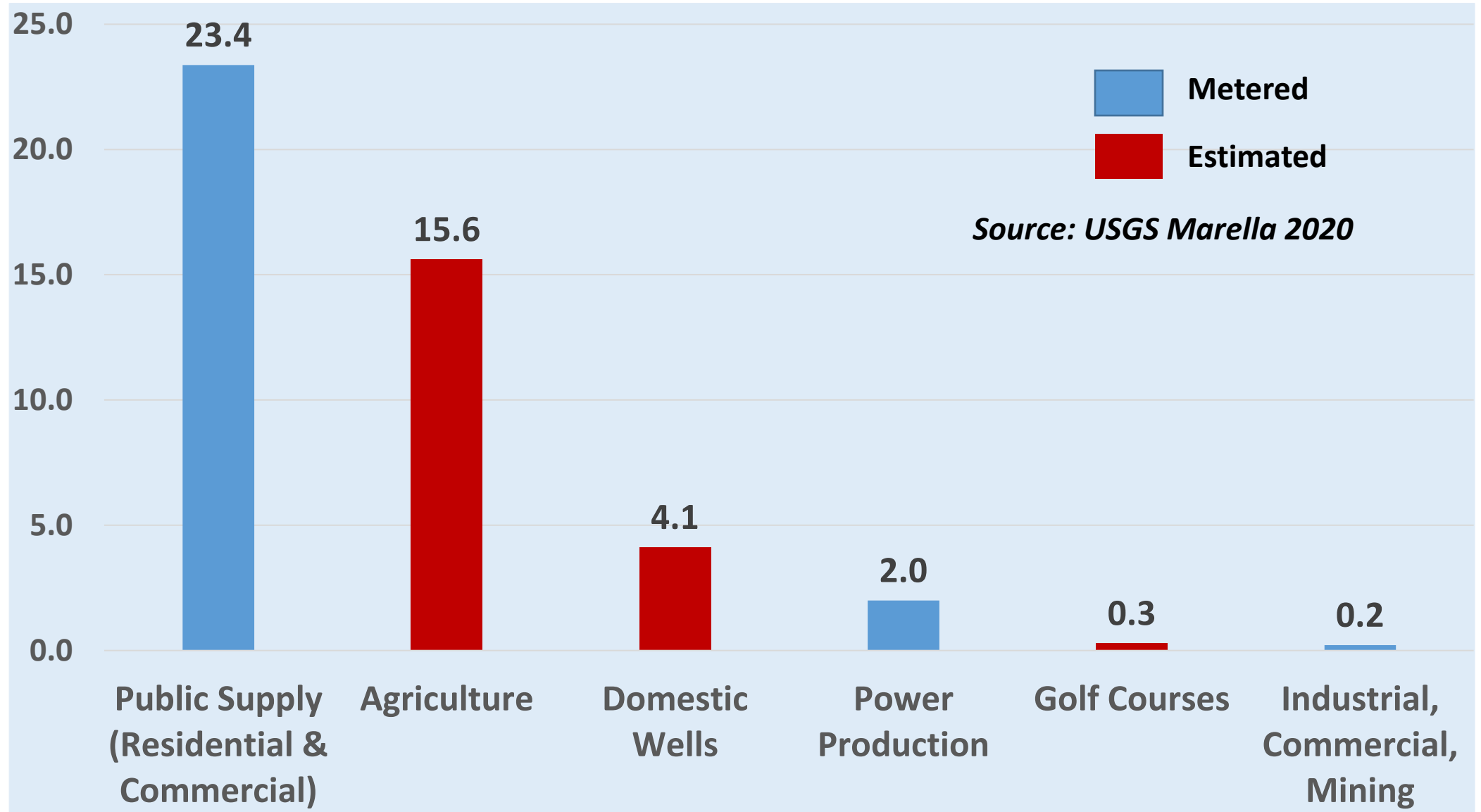
When water is pulled from the aquifer in the **springshed** it reduces the amount of water that can flow to the springs.

Source: Waters Journey by Wes Skiles

Water Use is Regulated by Water Management Districts (with oversight by FL Dept. of Environmental Protection)

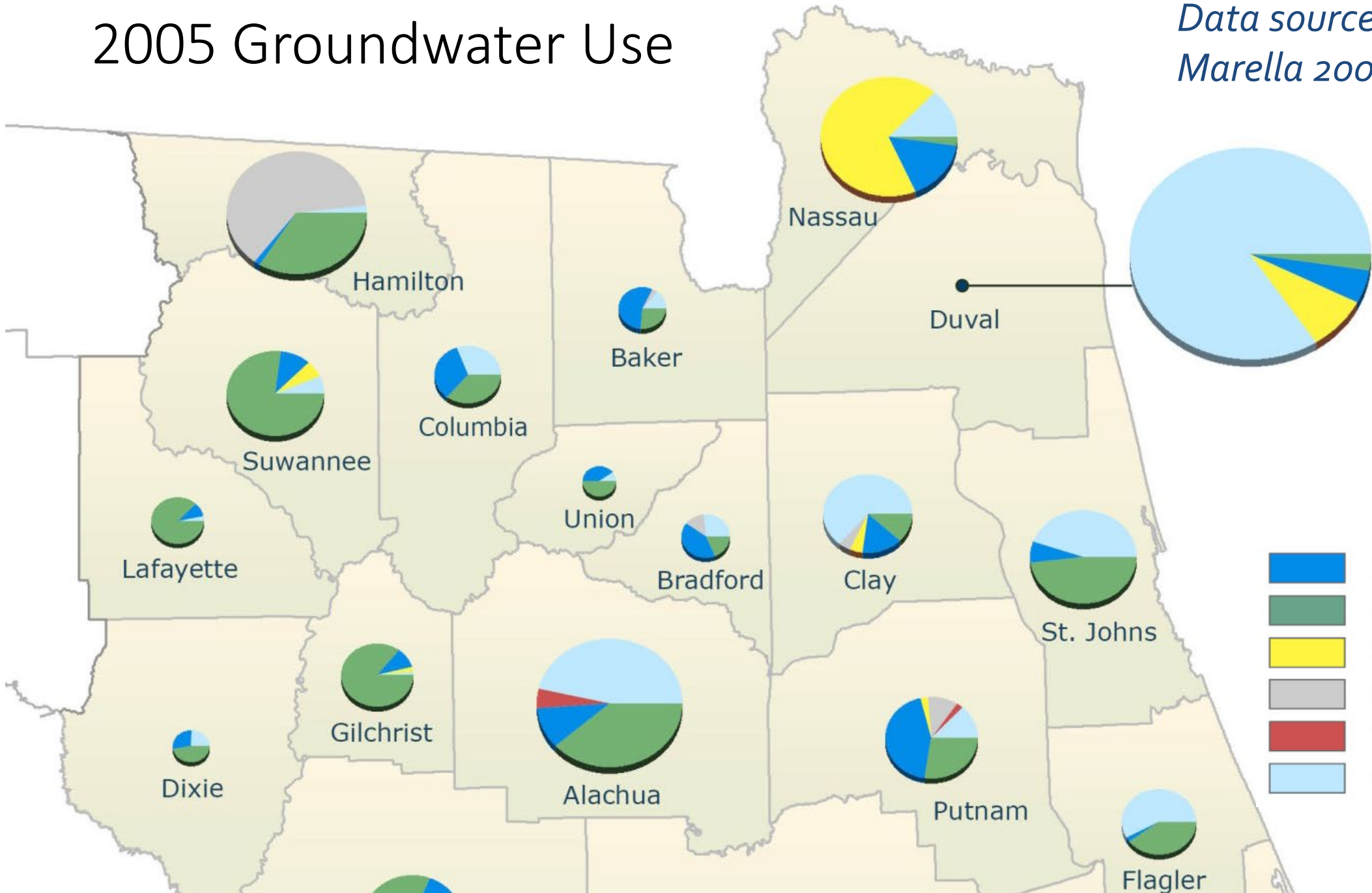
- Water supply assessments are performed to identify areas that may not meet future demand
- Minimum Flows and Levels (MFLs) are set to protect natural systems
- Consumptive Use Permits (CUPs) are issued for uses that meet the three prong test:
 - reasonable-beneficial use
 - will not interfere with existing legal uses of water
 - consistent with the public interest

Alachua County 2015 Groundwater Pumping Million Gallons Per Day (MGD)



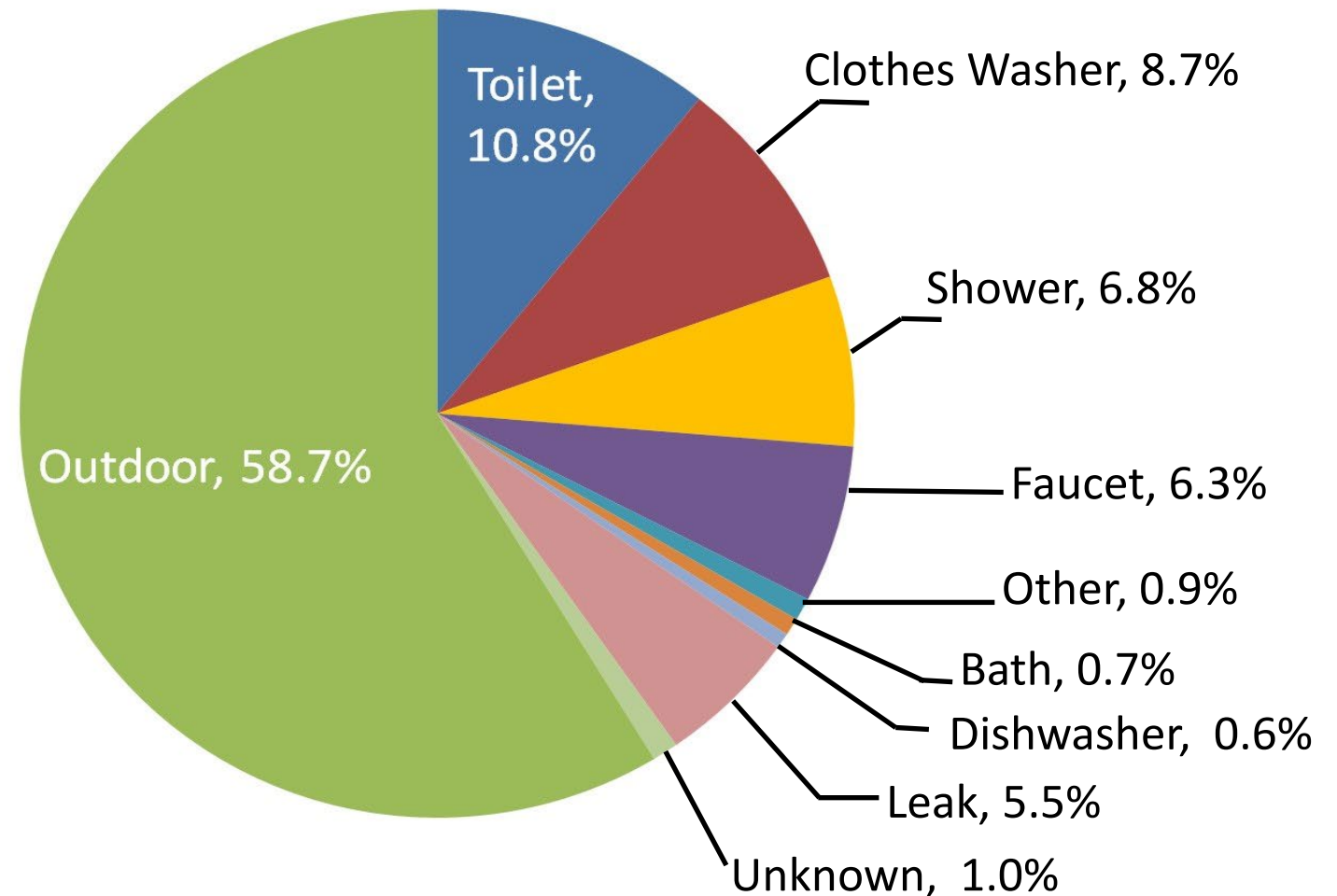
2005 Groundwater Use

*Data source:
Marella 2008*



Residential Water Use

**“ The single most effective strategy to reduce water demand in Florida is to significantly reduce the amount of water used for landscape irrigation.”
Water2070 report**



Typical water use when there is an irrigation system

Source: AWWA 1999

Protecting Our Water Makes Economic Sense

- » Our lakes, springs, and rivers are economically important for tourism
 - 84 million in recreation alone in the Santa Fe springs region in 2013
- » Save money now and later by conserving water
 - » Alternative water supplies will be MUCH more expensive



Springs Protection Menu for Local Governments

- Land Conservation
- Land Use Planning
 - Landscaping, stormwater, buffers, Florida Water Star
- Ordinances
 - Fertilizer, Irrigation, septic
- Education and Voluntary Programs
 - Extension, rebates, social media
- Leading by Example
 - Demonstration sites, government buildings



Contact Information

Stacie Greco

Water Resources Program Manager

Alachua County Environmental Protection

352-264-6829

Sgreco@AlachuaCounty.us

www.MyYardOurWater.org

www.AlachuaCountyWater.org

